

RE/MAX Vision Realty, Inc.  
Sujan Shah, Broker  
416.402.1040

Illustration is artist's impression

"IT'S AN INCREDIBLE  
SITE AND GREAT GULF  
WANTED SOMETHING  
JUST AS INCREDIBLE."

The building at One Bloor had to be special. It had to be iconic and unique and that's what we designed."

David Pontarini/Architect



“AT ITS CORE, ONE  
BLOOR IS A SIMPLE,  
CONTEMPORARY  
HIGH RISE BUILDING  
WITH THE AESTHETIC  
AND PURITY OF  
MODERNISM.

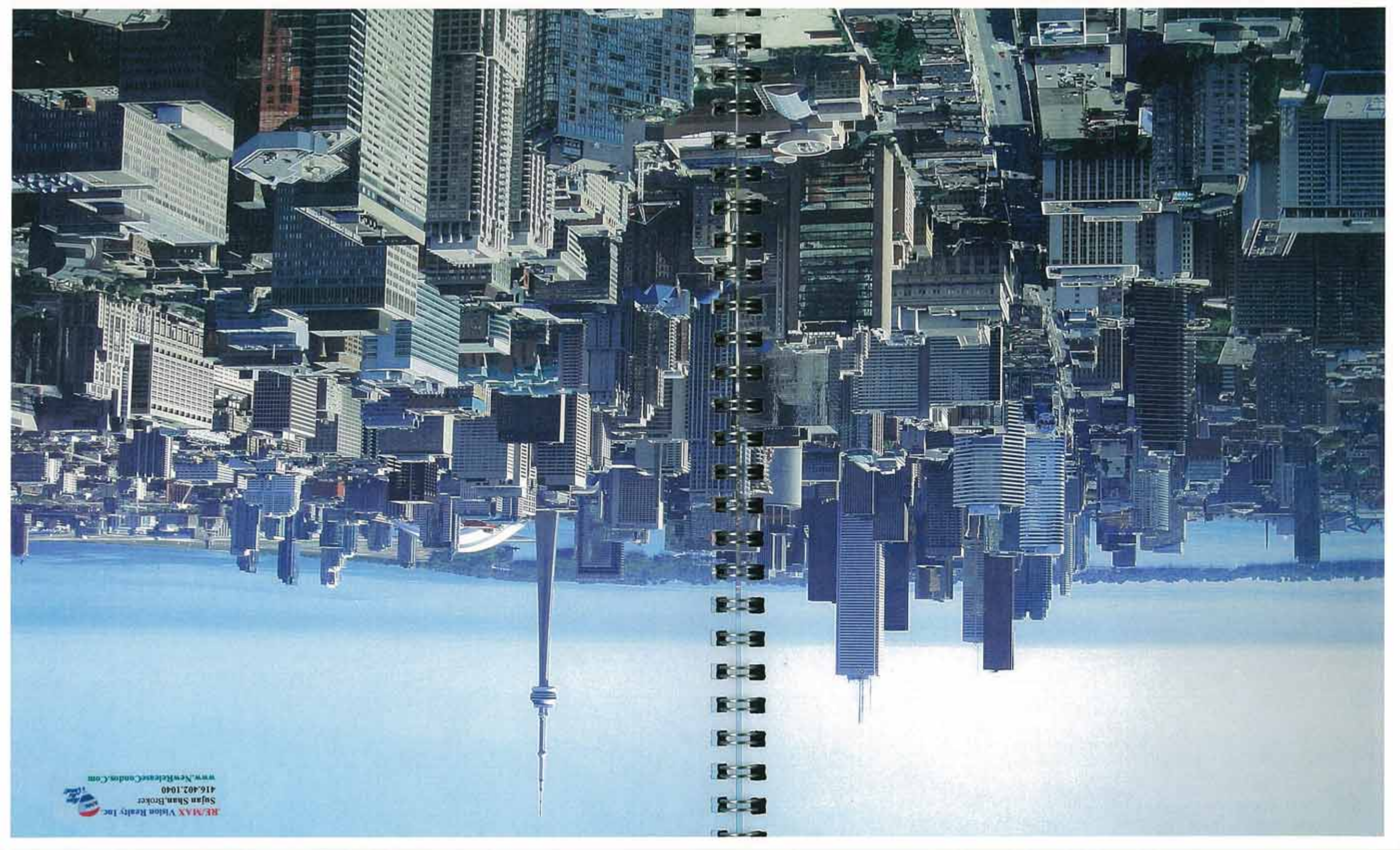
Then we sculpted it. We didn't want to overwhelm the intersection so we conceived a transparent envelope at street level. We looked at how the building sits in the skyline. Then, with the Great Gulf team, refined and defined the final design.”

David Pontarini/Architect

“Whether it is the dynamic, colourful streetscape of Bloor and Yonge, the architectural skyscape of many of Toronto’s beautiful new and heritage buildings or the magnificent, sweeping panoramas of the city and lake from the highest floors,

PRACTICALLY EVERY  
SUITE AT ONE BLOOR  
WILL OFFER RESIDENTS  
PRIVILEGED VIEWS THAT  
ARE INCOMPARABLE.”

Great Gulf / Developer





**RE/MAX** Vision Realty Inc.  
Susan Shan, Broker  
416.402.1040  
[www.NewReleaseCondos.com](http://www.NewReleaseCondos.com)

# IT HAD TO BE A FANTASY.

One Bloor couldn't and wouldn't be ordinary. It had to be extraordinary. It had to be a building like no other.

"THIS IS CANADA'S  
CORNER. IT'S WHERE  
EAST MEETS WEST  
AND NORTH MEETS  
SOUTH IN THE BIGGEST,  
MOST VIBRANT CITY  
IN THE COUNTRY.





CHANEL



"One Bloor is an iconic global address. Its location, minutes from all the Canadian flagships of international fashion and design is second to none. Holt Renfrew, Cartier, Prada, Hermes, Gucci, Chanel, Louis Vuitton and more are neighbours. The spectacular new Royal Ontario Museum and literally hundreds of fabulous restaurants, cafes, stores, services and cultural venues are all within a short walk. And, at One Bloor, residents will have direct access to both the Bloor and Yonge subway systems. It was a site we couldn't resist acquiring."

**Great Gulf/Developer**

"IMAGINE A PLACE OF  
FANTASY AND



WILSON  
Wilson Realty, Inc.  
Sojren Shandrock  
116-402-1000  
www.SojrenShandrock.com

# INDULGEMENT.

THIS IS NIRVANA FOR  
BODY AND SOUL.  
AN ENVIRONMENT  
THAT ENCOMPASSES  
WELLNESS, FITNESS  
AND PAMPERING.

Anna Simone/Interior Designer

# “CURVACEOUS, ORGANIC, NATURAL ELEMENTS LIKE STONE, WOOD, WATER AND FIRE.

Imagine dramatic spaces with intricately curved ceilings and walls, etched metallic mirrors and reflective mosaics. Throughout the space you'll discover whimsical furnishings, and interior sculpture gardens with views of the city forming the perfect urban backdrop. Think of fitness taken to the extreme - equipment on steroids. Get wet in the swimming pool, in the hot plunge, in the cold plunge, in the steam room. In the experiential showers...Then sit beneath the stars beside a fire pit on the lushly landscaped terrace.

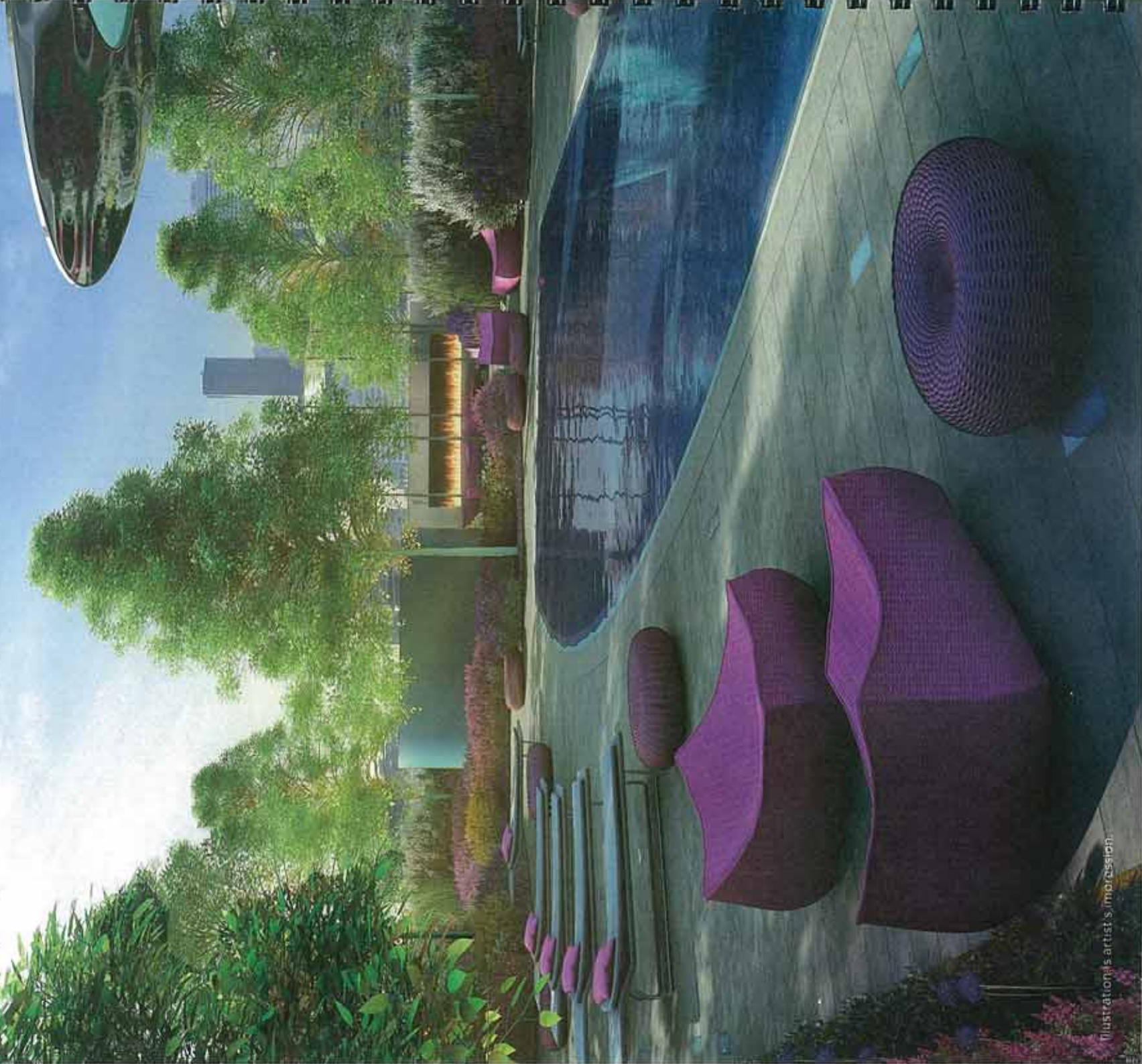
Every detail. Every design. Every amenity has been considered and improved to offer residents at One Bloor the total sybaritic experience. It just doesn't get any better than this."

Anna Simone/Interior Designer

“THE LANDSCAPE AT  
ONE BLOOR DOES  
NOT FOLLOW A RIGID  
FORMAL GEOMETRY,  
BUT IS MORE ORGANIC  
AND CURVACEOUS.

On the 7th floor terrace for instance, we created one long body of water that weaves through the interior and exterior spaces connecting both areas physically and rhythmically.”

Janet Rosenberg/Landscape Designer



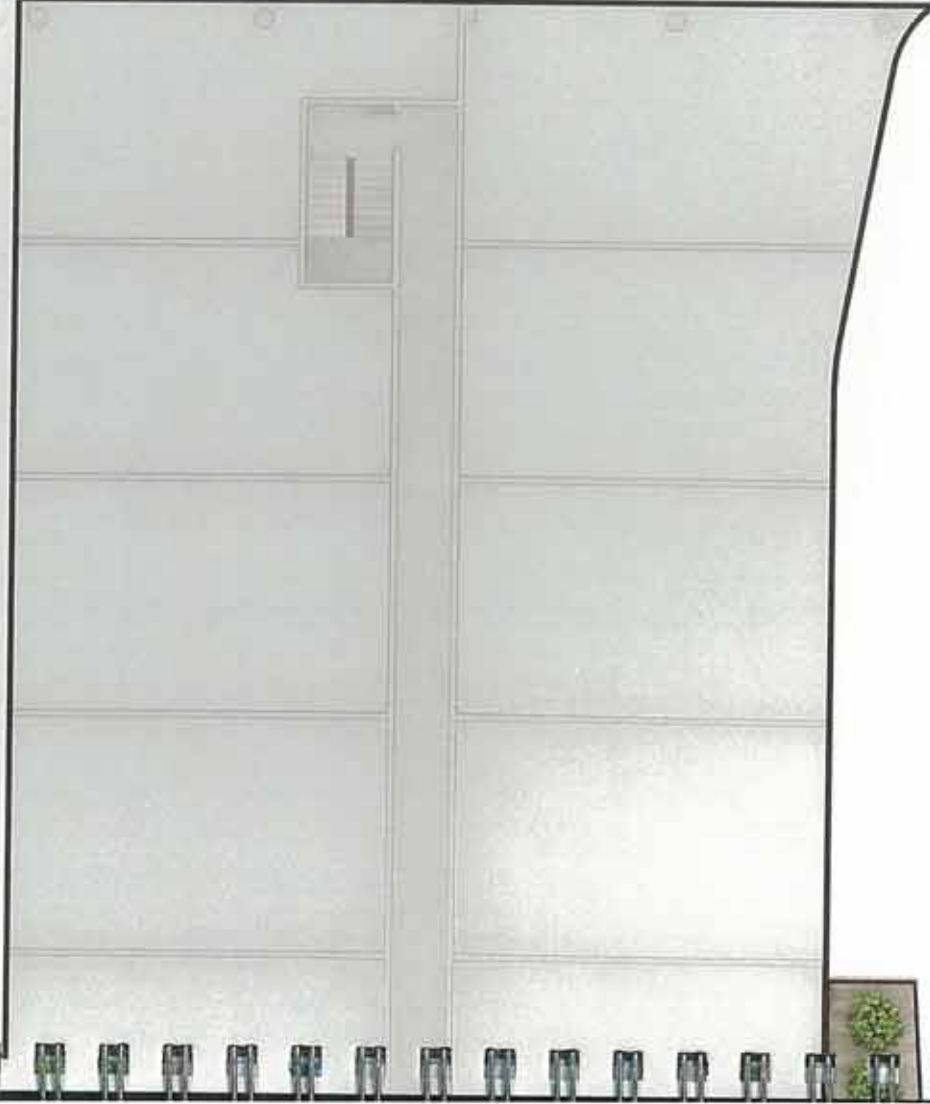




**RE/MAX** Vision Realty Inc.  
 Sujan Shan, Broker  
 416.402.1040  
[www.NewReleaseCondos.com](http://www.NewReleaseCondos.com)

# YOUR NIRVANA FOR BODY AND SOUL.

- A / Shower/
- B / Cold Plunge/
- C / Hot Plunge/
- D / Laconium Steam Suite/
- E / Tepidarium Steam Suite/
- F / Ice Fountain/
- G / Jet Massage/
- H / Foot Relax Basins/
- I / Experience Shower/



LEVEL 6



Outdoor fireplace

Indoor/Outdoor pool

Year-round

Foot bath

Foot bath

Spa/Hot tub

Relax

Her changing room

Steam

His changing room

Steam

Weights

Fitness

Bench

Lounge

Fitness/Cardio 2

Kinesis/  
Pilates room

Yoga/  
Spinning

Fitness/Cardio 1

Bench

**RE/MAX** Vision Realty Inc.  
Sujan Shan, Broker  
416.402.1040  
[www.NewReleaseCondos.com](http://www.NewReleaseCondos.com)

WORK OUT.  
STRETCH. PLUNGE. RELAX.



LEVEL 7

# /DEVELOPER/

## GREAT GULF

The Great Gulf Group is an international group of companies who span the entire real estate spectrum, from land acquisition and assembly, to the design and construction of high-rise condominiums, resorts and single family homes in master-planned communities throughout North America. Here in Toronto, the following properties reflect their diverse approach to condominium design. The luxury of Saint James at King & Jarvis and The Regency at Bloor & Royal York. The polished stone and Art Deco detailing of The Morgan at Spadina and Richmond. The towering contemporary icon at 18 Yorkville. The urban elegance of The Hudson at King & Spadina, the exciting design development of X. The Condominium and X2 at Charles and Jarvis and Charlie at King and Charlotte. All are testaments to their commitment to design and construction excellence. One Bloor is Great Gulf's latest flagship development. Located at the intersection of Yonge and Bloor Streets in Toronto, and rising 65 storeys, it will be an iconic global address.

## FIRST GULF CORPORATION

Founded in 1987, First Gulf is a recognized and respected name in office, commercial and industrial real estate. First Gulf's team of professionals handle all aspects of the development process from site acquisition and planning approvals through to construction, leasing, financing and property management. First Gulf has developed and constructed over 20 million square feet of industrial, retail and office real estate with an aggregate value exceeding 1.5 billion dollars. First Gulf's established credibility as a reputable developer and contractor is evident in its strong partnership and lasting relationships with many of Canada's major financial institutions, pension funds and REITs.

# THE TEAM

## HARIRI PONTARINI ARCHITECTS

Hariri Pontarini Architects, established in 1994, is a Toronto-based architectural practice. Founding partners, Slamak Hariri and David Pontarini, are committed to creating enduring architecture; this diversity of practice supports the firm's expertise and reputation in the development of institutional and mixed-use residential projects. Recognized and widely published, HPA has received over 35 awards for their contributions to diversity of urban context.

The firm's extensive portfolio consists of a wide range of projects including institutional, residential, commercial and corporate buildings. Known for their understanding of complex design issues surrounding city building, Hariri Pontarini Architects excels at integrating new developments within existing urban structures.

## CECCONI SIMONE INC.

Cecconi Simone Inc. is an internationally renowned interior design consulting firm based in Toronto. Under the direction of partners Anna Simone and Elaine Cecconi, the firm has completed major projects throughout North America, China, Italy and Dubai. Their award-winning interiors for clients in hospitality and restaurant, corporate and financial, government and residential, have been featured in numerous national and international design publications. Cecconi Simone's diverse range of work and multi-disciplinary design philosophy gives them a unique understanding of how people live their lives and what design solutions are required to enhance their lifestyle. In addition to One Bloor Cecconi Simone are involved in X The Condominium, X2, and Charlie Condos for Great Gulf.

# /THE TEAM/

## JANET ROSENBERG + ASSOCIATES

Janet Rosenberg + Associates is one of Canada's most highly regarded landscape architecture firms. Established in 1983, their portfolio of work includes master-planning, design and project management for numerous government, institutional, academic, commercial and residential clients. The firm has been honoured with over 70 major awards. And many of their commissions have been published in international, national and regional design, landscape and architectural journals. Janet Rosenberg, company founder, has a passion and commitment to her chosen profession and has shared her knowledge and enthusiasm by participating in numerous conferences and roundtables and by lecturing on landscape design and master-planning at the university level.

## L.A. INC.

L.A. Inc. is one of North America's foremost companies specializing in branding, marketing and communications for major real estate developments throughout North America and Europe. The Toronto-based firm has created exciting and memorable brands and award-winning marketing programs for major developments in New York, South Florida, Las Vegas, Atlanta, Philadelphia, Chicago, New Jersey, Nashville, Charlotte, Toronto, Montreal, Vancouver, Austin and Budapest.

## BAKER REAL ESTATE INCORPORATED

For over a decade, Baker Real Estate Incorporated has provided exemplary services to a broad range of developer clients. With annual new home and condominium sales of over a billion dollars, Baker is one of Canada's most successful real estate companies, providing sales and marketing expertise to prestigious projects throughout Canada and the United States.

“THE INTERIORS AT  
ONE BLOOR CREATE  
A CONTINUOUS VISUAL  
EXPERIENCE FROM  
THE INSIDE OUT. THE  
END RESULT BEING  
A SYMPHONY OF ALL  
DESIGN DISCIPLINES  
CONVERGING TO CREATE

A UNIFIED

VOCABULARY.”

Anna Simone/Interior Designer

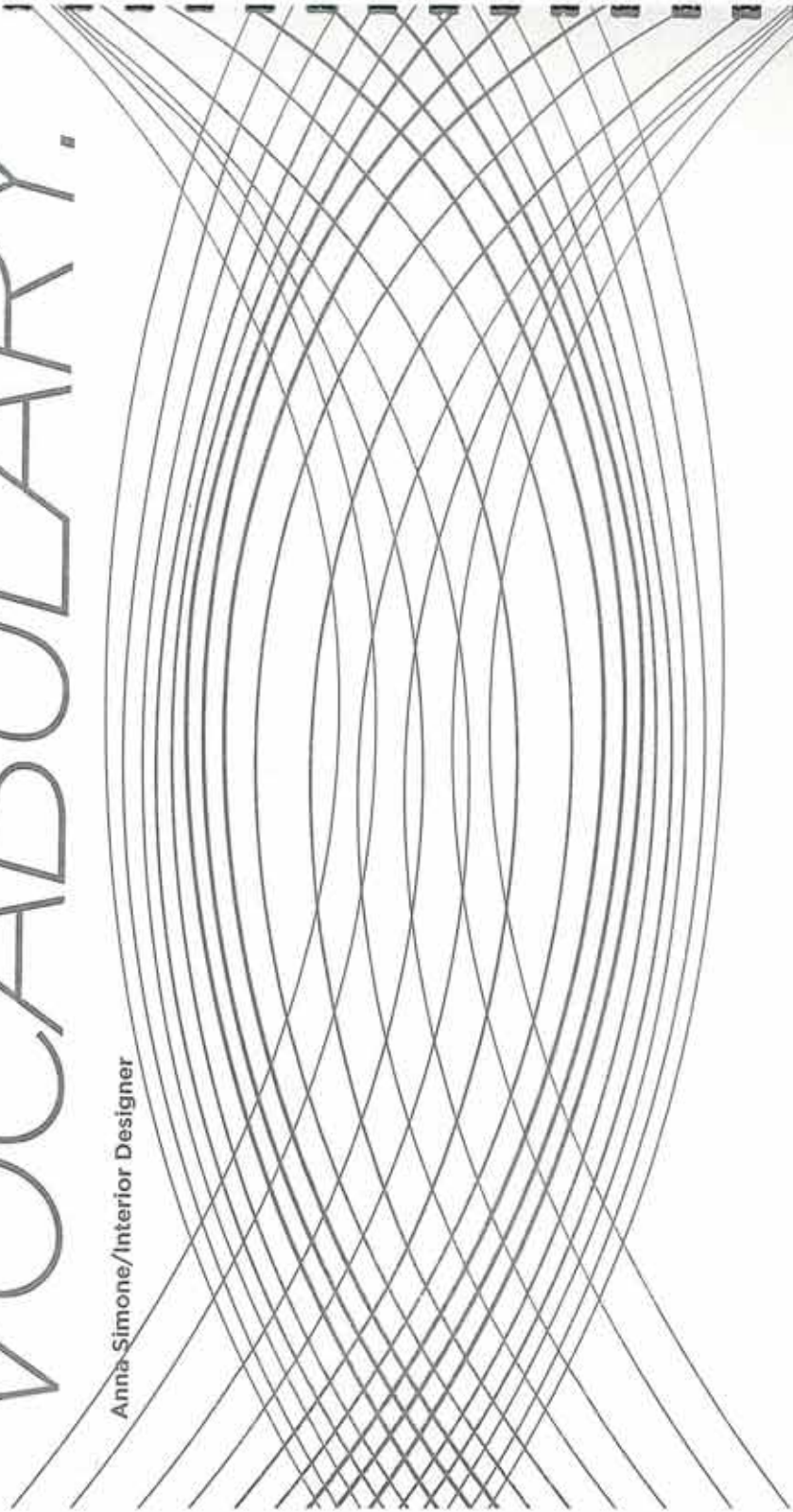




Illustration is artist's impression.  
Some features and finishes shown may be an upgrade.